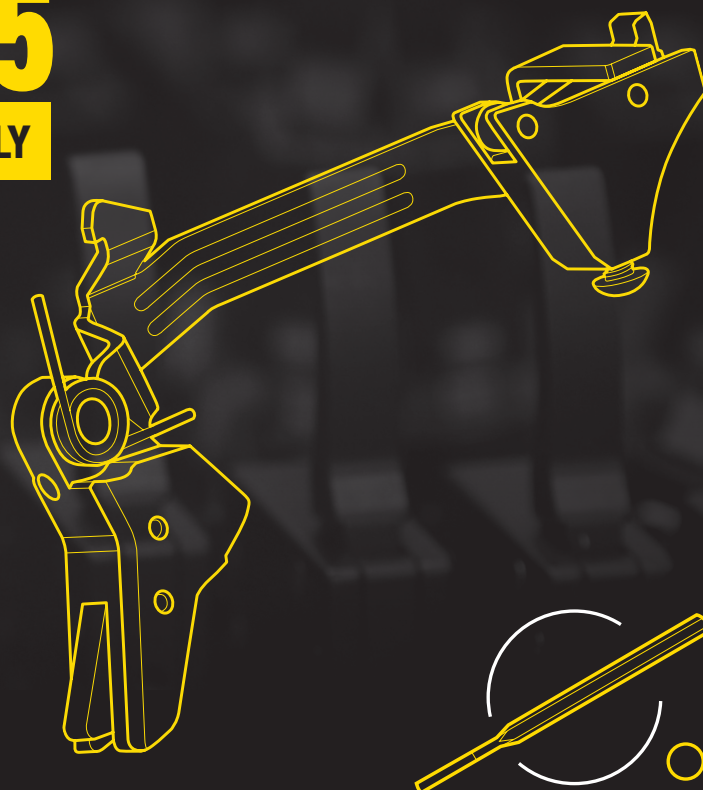


THE ALPHA COMPETITION SERIES GLOCK GEN5

DESIGNED FOR COMPETITION USE ONLY

INSTALLATION INSTRUCTIONS

Thank you for purchasing this Timney Trigger. It has been designed and manufactured to provide you with a lifetime of dependable service. Each trigger is hand tested and calibrated on an action specific to your platform before leaving our factory. Please read these instructions fully before you begin installing the trigger, you'll be glad you did.



TOOLS NEEDED:

Straight Punch
or Glock Tool

TIMNEY TRIGGER GUARANTEE

Material and workmanship: This Timney trigger has been carefully inspected, tested and adjusted to give a lifetime of dependable service. Every possible care has been exercised in its design and construction. If any defect in workmanship or material should develop under conditions of normal use and service, any necessary repairs, including parts and labor will be made at NO CHARGE to the purchaser providing that our inspection reveals parts were not damaged through accident, alteration, misuse, abuse or other causes beyond our control. We neither assume nor imply any oral or statutory warranties, and we neither assume nor authorize any person to assume for us any obligation or liability in connection with this trigger. Repairs or disassembly of this trigger in any manner without specific authorization, voids the guarantee.

**IF YOU HAVE TROUBLE CHECK OUT TROUBLESHOOTING STEPS ON
WWW.TIMNEYTRIGGERS.COM OR CONTACT US**

Timney can also install your trigger for \$40.00 plus \$35.00 shipping and handling.

Mail: 2020 W Quail Ave, Phoenix AZ. 85027 **Phone:** 623-223-1111 **Fax:** 623-223-1112 **Support:** technicalsupport@timneyusa.com

INSTALLATION INSTRUCTIONS

PARTS INCLUDED:



Use silver spring for lighter pull tension



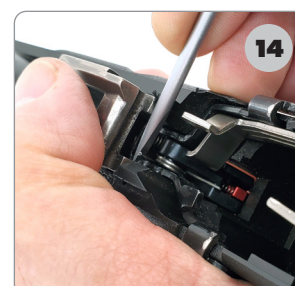
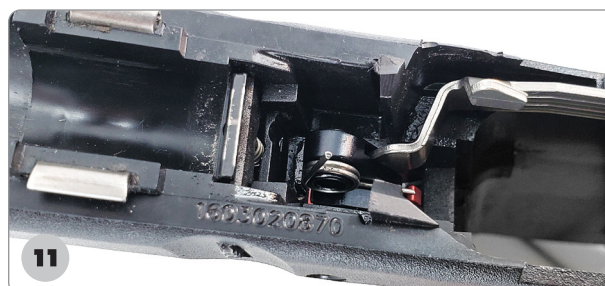
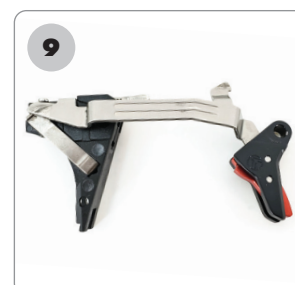
Use red spring for heavier pull tension



C-Washer

- 1 Before beginning work on any firearm make sure to remove the ammunition source and double check to ensure the chamber is empty
- 2 Remove slide from frame
- 3 Use a Glock tool or punch to push out the cross pins
- 4 Remove the locking block, slide stop and trigger assembly.
- 5 Remove the trigger, trigger bar, and spring from the receiver
- 6 Loosen the button-head screw in the Glock trigger housing about halfway and then install Timney's Sear assembly into the Glock trigger housing
- 7 Install the C-washer
- 8 Tighten screw with 1/16 hex key after pushing in the C-washer all the way in
- 9 Insert the new receiver as pictured, seated at the bottom of the trigger housing
- 10 Mate the trigger bar with the receiver and insert the trigger assembly into the frame
- 11 **Install the return spring with the "L" facing to the back of the frame on the left hand side of the trigger shoe**
- 12 Insert the slide stop lever
- 13 Place the locking block back into the frame
- 14 Simultaneously push the locking block down into the frame while pulling the upright spring leg under the locking block with a flathead screwdriver
- 15 Re-install cross pins
- 16 Reinstall the slide and perform function check.
- 17 You are now ready to enjoy your Timney Trigger

*If needed use the .035 hex driver to adjust the take-up



IF YOU HAVE TROUBLE CHECK OUT TROUBLESHOOTING STEPS ON WWW.TIMNEYTRIGGERS.COM OR CONTACT US

Timney can also install your trigger for \$40.00 plus \$35.00 shipping and handling. Mail: 2020 W Quail Ave, Phoenix AZ. 85027
Phone: 623-223-1111 Fax: 623-223-1112 Support: technicalsupport@timneyusa.com

